

FITC Anti-Human CD11b Monoclonal Antibody



天津三箭生物技术股份有限公司
Tianjin Sungene Biotech Co., Ltd.
精准 高效 稳定 Precision Efficient Stable

Catalog Number	Vial Size
H20113-02G	25 tests
H20113-02H	100 tests

Market | 400-621-0003
marketing@sungenebiotech.com

Support | 022-66211636-8024
techsupport@sungenebiotech.com

Web | www.sungenebiotech.com

Important Note: Centrifuge before opening to ensure complete recovery of vial contents.
This product is guaranteed up to one year from purchase.

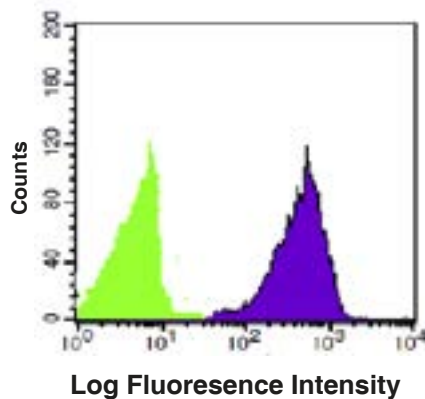
Purified Antibody Characterization

Clone	Isotype	Reactivity
HI11b	Mouse IgG2b	Human

Description

CD11b is a 165-170 kD type I transmembrane glycoprotein also known as α M integrin, Mac-1, CR3, and C3biR. CD11b non-covalently associates with integrin β 2 (CD18) and is expressed on granulocytes, monocytes/macrophages, dendritic cells, NK cells, and subsets of T and B cells. CD11b/CD18 is critical for the transendothelial migration of monocytes and neutrophils. It is also involved in granulocyte adhesion, phagocytosis, and neutrophil activation. CD11b/CD18 interacts with ICAM-1 (CD54), ICAM-2 (CD102), ICAM-4, CD14, CD23, heparin, iC3b, fibrinogen, and Factor X.

Illustration of Immunofluorescent Staining



Human peripheral blood monocytes and granulocytes stained with FITC anti-human CD11b

Product Information

Conjugation: FITC

Formulation: PBS pH 7.2, 0.09% NaN_3 , 0.2% BSA

Storage: Keep as concentrated solution. Store at 4°C and protected from prolonged exposure to light. **Do not freeze.**

Application: Recommended Application: FC

Usage: Each lot of this antibody is quality control tested by immunofluorescent staining with flow cytometric analysis (The amount of the reagent is suggested to be used from 20 μL to 5 μL per 100 μL of peripheral blood. Please check your vial). Since applications vary, the appropriate dilutions must be determined for individual use.

References

[1] Stewart, M., et al. 1995. Curr. Opin. Cell Biol. 7:690.

For Research Use Only.